

A brand of
Aqseptence Group

Noggerath® Rotating Bar Screen RBS-RED / RBS-T-RED Septage Receiving Station RBS-SRS-RED

Screening system for the separation of solids or screenings from the liquid phase, including screenings transport, compaction and discharge for further disposal. The version RBS-SRS-RED is a compact Septage Receiving Station for the effluent discharged from vacuum trucks (septage tank collection).



With the Rotating Bar Screen Double Drive RBS-RED / RBS-SRS-RED Passavant-Geiger offers a compact system for automatic waste water treatment with a proven double drive concept. In contrast to the conventional technology the Noggerath® Rotating Bar Screen RBS-RED / RBS-SRS-RED is designed without any bearing and fixed rotating arm in the lower part. The inlet area is totally free with significant advantages for operation and maintenance. The Noggerath® Radial Eco Drive enables an axially free discharge area without drive elements. This secures a

blockage-free discharge of the machine.

The liquid flows into the fixed bar screen cylinder which is open on the inlet side and set at an angle of 35°. A continuous layer of solids, with a larger diameter than the bars spacing, accumulates on the surface of the panel. The resulting headloss causing the level of the liquid upstream of the bars screen to rise. A level measuring device, installed upstream of the Rotating Bar Screen, monitors the respective level of the effluent. When the preset maximum level is reached or exceeded, the

drive of the cleaning device is automatically activated. The deposits of solid retained in the bars screen are then collected and conveyed by the cleaning element to the upper part of the drum, where a washing bar and a wiper force the screenings collected in the internal hopper. The solids in the internal hopper are conveyed by the conveyor system, moved by a second drive, to the discharge area. Here the solids are additionally compacted in the compacting zone and the dewatered solids are then automatically discharged. The discharge is axial to the direction of the screw/spiral. As a result of the cleaning and discharging processes, the level of the liquid upstream of the sieve basket drops. When this level reaches or falls below the set level, the spiral drive switches off automatically. The RBS-SRS-RED is completed with a stainless steel tank and includes rotating spray water nozzles to reduce the biohazard risks/grow of biomass. The operator starts the unit using a local control station. As option is possible to have a stone trap with extraction screw.

Benefits

- Bar Screen Cylinder with flow favorable bar profile (form factor 0.84) to reduce the hydraulic losses and maximize the flow rate.
- Double Drive: The internal feed hopper and the conveyor trough can be run empty completely, independently of the rotation of the cleaning element.
- Without rotating arm at the inlet area: hydraulic performance and reliability are improved
- Without drive elements in the discharge area: axial discharge free of blockages and clogging

Design sizes & performance

RBS-RED / RBS-SRS-RED	800	1,000
Spiral Drive [kW] (400V/50Hz)	1.50	1.50
Rake Drive [kW] (400V/50Hz)	0.75	0.75
Flow rate [m³/h]	up to 850	up to 1,500
Flow rate "SRS" [m³/h]	up to 150	up to 200
Gap size	6 – 10 mm Papro Profile	
Installation angle	35°	35°

Materials

Bar screen, casing, supports, tank	Stainless steel AISI 304 or AISI 316 L Others on request
Spiral	Special Micro Alloy Steel St 52 (carbon steel in acc. with Passavant-Geiger standard), alternatively stainless steel AISI 304 or AISI 316 L
Pinion, gear segments	Nylon (Polyamide)
Brush	Plastics, alternatively AISI 304

Options

- Discharge box
- Discharge extension
- Hygienic bagging of screenings
- Automatic flushing of pressing zone with solenoid valve
- Screenings washing bar
- Heating / frost protection

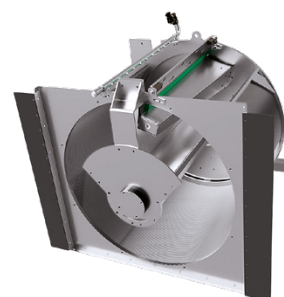
Applications & fields of operation

RBS-RED / RBS-T-RED

Municipal and industrial wastewater treatment

RBS-SRS-RED

Sludge and septic sludge screening



Passavant-Geiger GmbH Water Processing Solutions

Passavant-Geiger-Strasse 1
65326 Aarbergen · Germany
Phone +49 6120 280
info@passavant-geiger.com

Aqseptence Group Carpi Srl, Soliera Water Processing Solutions

Via Pitagora 30
41010 Soliera, MO · Italy
Phone +39 0595 257 20
info.watertreatment.it@passavant-geiger.com

