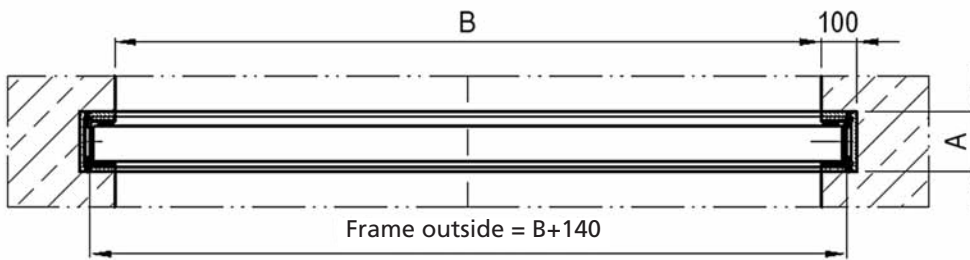
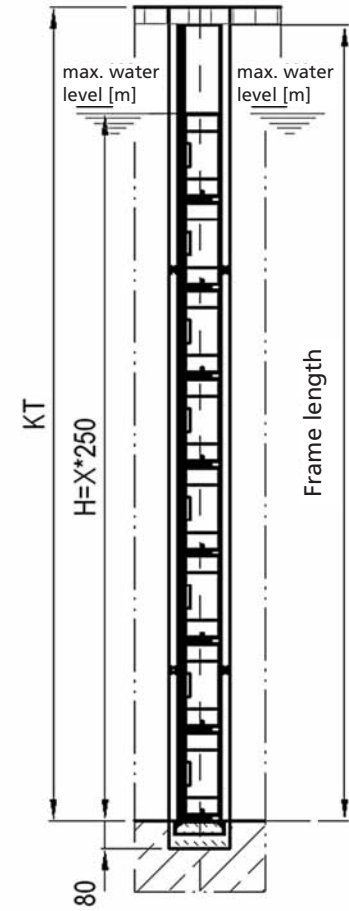
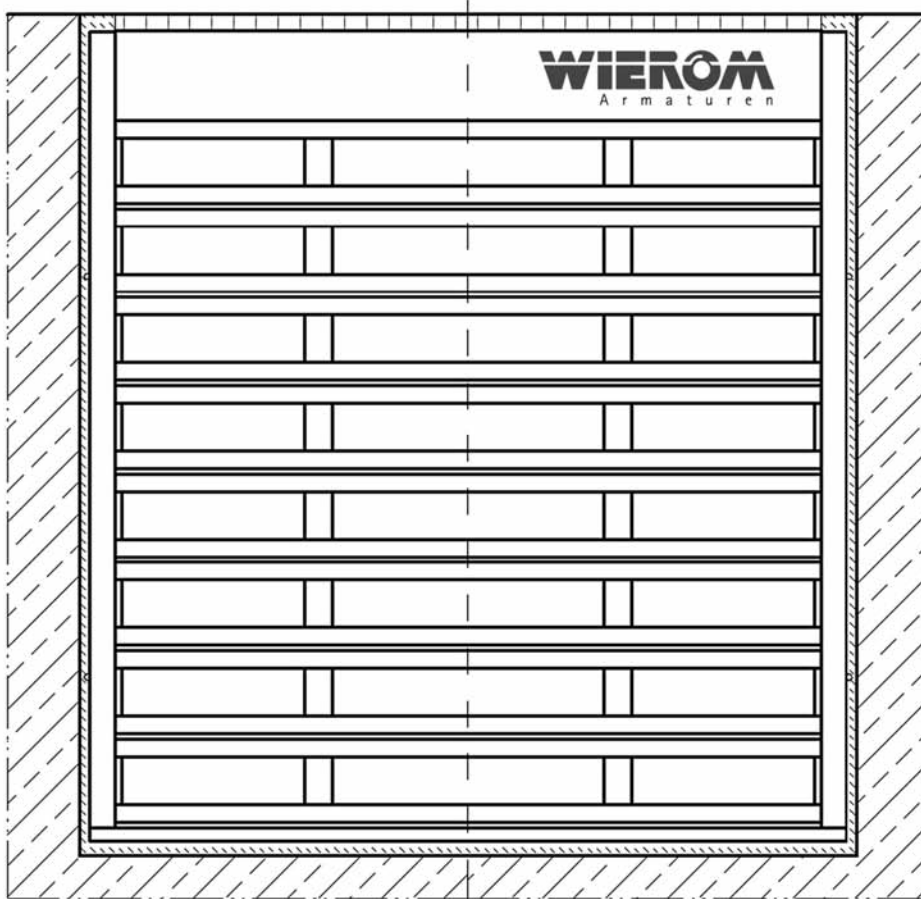
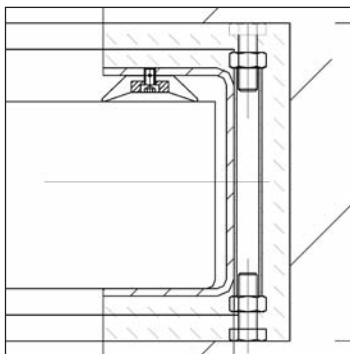


WIEROM Bulkhead beam – DAB

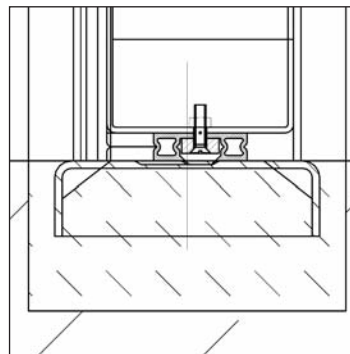
### 5. WIEROM Bulkhead beam – DAB



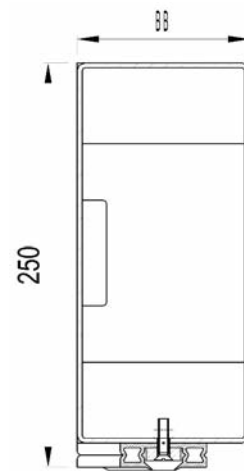
Detail: Side frame



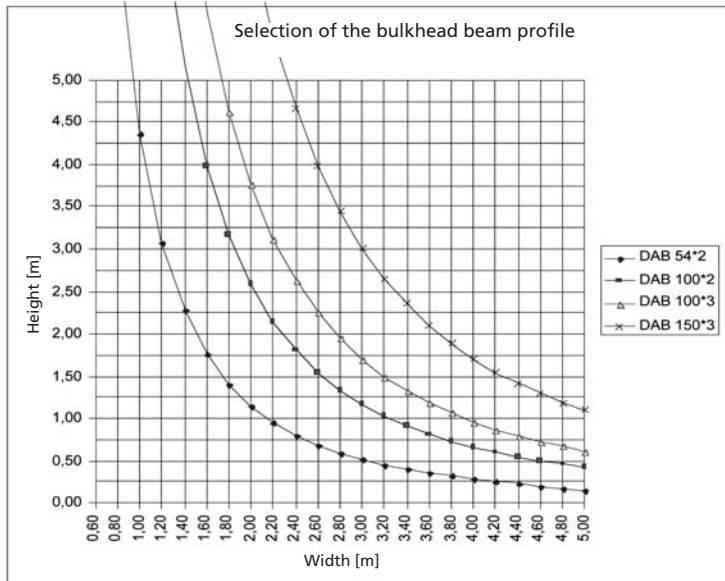
Detail: Base profile



Beam profile



## 5.1 Selection table



## 5.2 Application

Shut-off device for open channels or openings. Water pressure can be exercised on both front and rear.

## 5.3 Design properties

Canted U-shaped profile frame. Sealing is provided by a replaceable, double-action double-lip seal, which is screwed to the side of the frame.

Beams constructed as canted C profiles. The thickness of the beams and sheets is adjusted to meet the structural requirements.

The sealing between the individual beams and the channel base is achieved by a profile gasket attached to the bottom of the beam.

## 5.4 Rated widths

Up to 3,000 x 3,000. **Larger dimensions available on request.**

## 5.5 Materials

Stainless steel 1.4301/AISI 304L and 1.4571/AISI 316Ti. **Aluminium beams available on request.**

## 5.6 Operation

The beams are positioned and lifted out manually using a manhole cover lifting tool. (Please order separately).

## 5.7 Frame designs

### R1 – Basic design

Frame with lateral clamping devices for fastening inside a wrap-around recess of approx. A x 100 mm. Subsequent casting with wear-resistant cast concrete.

### R3 – Frame for anchor attachment inside the channel

Frame with lateral angle brackets for anchor attachment inside a channel. The sealing between the frame and the construction is achieved by grouting the gap between the frame and the channel wall. Grouting must be performed on site. Please order fastening material separately.

### R4 – Frame for anchor attachment in front of the channel outlet

Frame with lateral angle brackets for anchor attachment to a level concrete wall. The sealing between the frame and the construction is provided by a one-sided self-adhesive cellular rubber seal (included in delivery). Please order fastening material separately.

## 5.8 Recess dimensions – A – for bulkhead beam

Beam	54 x 2 mm	130 mm
Beam	100 x 2 mm	170 mm
Beam	100 x 3 mm	170 mm
Beam	150 x 3 mm	200 mm